



Product Service

CERTIFICATE

No. Z2 18 05 53696 02151

Holder of Certificate: **KOMPAN A/S**

C.F. Tietgens Boulevard 32C
5220 Odense SØ
DENMARK



Certification Mark:



Product:

Combination playing construction

The product was tested on a voluntary basis and complies with the essential requirements. The certification mark shown above can be affixed on the product. It is not permitted to alter the certification mark in any way. In addition the certification holder must not transfer the certificate to third parties. See also notes overleaf.

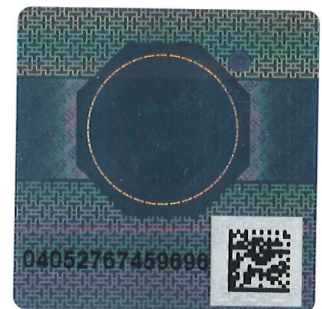
Test report no.: 713127108-14

Valid until: 2023-05-17

Date, 2018-06-01

(Michael Weber)

Page 1 of 2





Product Service

CERTIFICATE**No. Z2 18 05 53696 02151**

Model(s): PCM102500, PCM102600, PCM102700, PCM102800, PCM102900, PCM112600, PCM112700, PCM112800, PCM113000, PCM113200, PCM113400, PCM103600, PCM113700, PCM113800, PCM113900, PCM201700, PCM201800, PCM212400, PCM400700, PCM400800, PCM410600

Parameters: Posts 101.6 x 2 mm pregalvanized and powdercoated steel or alternatively 100 mm pressureimpregnated pine. Panels made of 19 mm HDPE. Platforms 17,8 mm HPL supported by aluminum frames. Steel tubing is made of 38 x 2 mm galvanized or powdercoated steel alternatively 48,3 x 3,8mm. Slides are made of rotomolded PE or stainless steel.

Tested according to: DIN EN 1176-1:2017
EN 1176-1:2017
DIN EN 1176-3:2017
EN 1176-3:2017

Production Facility(ies): 63062