



Product Service

CERTIFICATE

No. Z2 18 04 53696 02140

Holder of Certificate: **KOMPAN A/S**
 C.F. Tietgens Boulevard 32C
 5220 Odense SØ
 DENMARK



Certification Mark:



Product: **Swings**

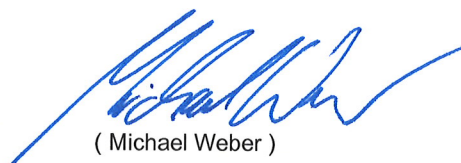
The product was tested on a voluntary basis and complies with the essential requirements. The certification mark shown above can be affixed on the product. It is not permitted to alter the certification mark in any way. In addition the certification holder must not transfer the certificate to third parties. See also notes overleaf.

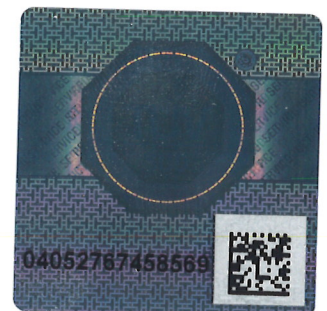
Test report no.: 713127108-3

Valid until: 2023-04-23

Date, 2018-04-24

Page 1 of 2


 (Michael Weber)





Product Service

CERTIFICATE

No. Z2 18 04 53696 02140

Model(s):**Swing frames:**KSW901, KSW902, KSW903, KSW904,
KSW905, KSW906,**Frames with seats:**KSW90002, KSW90010, KSW90011,
KSW90012, KSW90014, KSW90015,
KSW90016, KSW90021, KSW90031,
KSW90040, KSW90042, KSW90045,
KSW90046, KSW90047, KSW90060,
KSW90062, KSW90063, KSW90064**Parameters:**

Swing combination system made of two angled
A-supports and a crossbar with different seat variations.
Standard or antiwrap suspension and two heights:
2.0 m and 2.5 m. The frames are realised for one,
two or a cluster of frame sections.
Posts made of 95x95 mm pressure-impregnated pine
or 76.1x3 mm galvanized steel.
Crossbar made of 101.6x2.9 mm galvanized steel.

**Tested
according to:**DIN EN 1176-1:2017
EN 1176-1:2017
DIN EN 1176-2:2017
EN 1176-2:2017**Production
Facility(ies):**

63062

Page 2 of 2